



## 77th AYC Fall Series

Organizing Authority: Annapolis Yacht Club  
Annapolis, Maryland, USA

Event Website: <http://www.annapolisyc.com/racing/regattas>

### SAILING INSTRUCTIONS

There are two separate sailing instructions included in the following pages of this document.

For drop-marks races on September 30-October 1, 2017 and October 14-15, 2017, the  
**SAILING INSTRUCTIONS - DROP MARKS COURSES** apply.

For the fixed marks race on October 7, 2017, the  
**SAILING INSTRUCTIONS - FIXED MARKS COURSE** apply.



# 77th AYC Fall Series

Organizing Authority: Annapolis Yacht Club  
Annapolis, Maryland, USA

Event Website: <http://www.annapolisyc.com/racing/regattas>

## SAILING INSTRUCTIONS - DROP MARKS COURSES September 30-October 1, 2017 October 14-15, 2017

*The notation '[DP]' in a rule in the sailing instructions (SIs) or notice of race (NoR) means that the penalty for a breach of that rule may, at the discretion of the protest committee, be less than disqualification. The notation '[NPJ]' in a rule of the SIs or NoR means that a boat may not protest another boat for breaking that rule. This changes RRS 60.1(a).*

### 1 RULES

The regatta will be governed by the rules as defined in The Racing Rules of Sailing (RRS).

### 2 COMMUNICATIONS WITH COMPETITORS

2.1 Notices to competitors will be posted on the official notice board at:  
<https://bit.ly/ayc-fallseries-onb>.

2.2 On the water, the race committee intends to monitor and communicate with competitors via VHF radio on channel 72.

### 3 CHANGES TO SAILING INSTRUCTIONS

Any change to the SIs will be posted no later than 2 hours before the first scheduled warning signal on the day it will take effect, except that any change to the schedule of races will be posted by 2000 on the day before it will take effect.

### 4 SIGNALS MADE ASHORE

4.1 Signals made ashore will be displayed from the flagpole at the AYC Junior Sailing Center.

4.2 When flag AP is displayed ashore '1 minute' is replaced with 'not less than 60 minutes' in the race signal AP.

### 5 SCHEDULE OF RACES

5.1 The following classes are racing on the following days:

Dates	
Sat, Sept 30 & Sun, Oct 1	Sat, Oct 14 & Sun, Oct 15
J/22 (30th only)	PHRF A0/A1 Combined
J/30	PHRF A2
J/80	J/35
J/70	J/105
PHRF B/C Combined	

5.2 The scheduled time of the warning signal for the first race of the day is 1100.

5.3 Three races are scheduled each day.

5.4 No warning signal will be made after 1600 on October 1 and October 15.

5.5 A post-race party with complimentary beer, cash bar and snacks on Saturdays September 30 and October 14.

5.6 The awards presentation with complimentary beer and cash bar will be held on Sundays October 1 and 15 after racing.

### 6 CLASS FLAGS

6.1 The class flags are:

Class	Class flag
J/22	Flag with J/22 logo
J/30	Flag D
J/80	Flag J
J/70	Flag F
PHRF B/C Combined	Flag 6
PHRF A0/A1 Combined	Flag 9
PHRF A2	Flag 2
J/35	Flag K
J/105	Flag V

6.2 Boats in PHRF classes shall clearly display two class flags - one at the bow and one at the stern.

### 7 RACING AREA

7.1 The racing area will be in the Chesapeake Bay off the mouth of the Severn River as shown in SI Attachment 1.

7.2 No later than 120 minutes prior to the first scheduled warning signal, the race committee will post the approximate intended location of the starting area on the notice board.

7.3 Approximately 60 minutes prior to the first scheduled warning signal, the race committee will announce the approximate location of the starting area on VHF radio.

7.4 Approximately 30 minutes prior to the first scheduled warning signal, the race committee will

announce location of the race committee signal vessel.

## **8 THE COURSES**

- 8.1 The courses are shown in SI Attachment 2.
- 8.2 No later than the warning signal, the race committee signal vessel will display the course to be sailed, the approximate distance between the leeward and windward marks, and the approximate compass bearing of the first leg of the course.
- 8.3 If the race committee signal vessel displays flag C before the warning signal, accompanied by a series of repetitive sounds, the first mark of the course is to be a change mark.

## **9 MARKS**

- 9.1 Starting marks, finishing marks, and mark 1a will be lime green cylinders. All other marks of the course will be orange cylinders. New marks used in accordance with SI 12 will be orange cylinders with a dark colored band.
- 9.2 A race committee starting or finishing vessel may set a stand-off buoy. When present, this stand-off buoy, the line attaching it to the race committee vessel, and the race committee vessel are all part of the starting or finishing mark.

## **10 THE START**

- 10.1 Approximately 15 minutes before the warning signal, the race committee will announce the starting order for the first race of the day.
- 10.2 The starting line will be between the staff or halyard with an orange flag displayed on the race committee signal vessel and the course side of the starting mark.
- 10.3 *[DP]* Boats whose warning signal has not been made shall avoid the starting area during the starting sequence for other races.
- 10.4 A boat that does not start within 10 minutes after her starting signal will be scored Did Not Start without a hearing. This changes RRS A4 and A5.

## **11 RECALLS**

The race committee will announce on VHF radio boats identified as OCS, UFD, or BFD. Failure to hear or receive such broadcasts, the timeliness of broadcast or the order in which boats are announced, will not be grounds for redress. This changes RRS 62.1(a).

## **12 CHANGE OF THE NEXT LEG OF THE COURSE**

- 12.1 To change the next leg of the course, the race committee will lay a new mark (or move the finishing line) and remove the original mark as soon as practicable. When in a subsequent change, a new mark is replaced, it will be replaced by an original mark.

- 12.2 After a start, if flag C is flown over flag Q, then the course change applies only to boats beginning their final leg to the finish. This changes RRS 33 (Changing the Position of the Next Mark) and RRS Race Signals.

## **13 THE FINISH**

The finishing line will be between a staff or halyard displaying a blue flag on the race committee finishing vessel and the course side of the finishing mark.

## **14 PENALTY SYSTEM**

- 14.1 Penalties while racing: RRS 44.1, One-Turn and Two-Turns Penalties will apply.
- 14.2 Penalties after racing: RRS/US Appendix V2, Penalty Taken After the Race, will apply.

## **15 TIME LIMITS**

- 15.1 If no boat has passed the first mark within 45 minutes after the starting signal, the race will be abandoned.
- 15.2 In each class, the time limit is 90 minutes.
- 15.3 Boats failing to finish within 20 minutes after the first boat in her class sails the course and finishes, and not subsequently retiring, penalized or given redress, will be scored Time Limit Expired (TLE) without a hearing. This changes RRS 35, A4, A5 and A11.

## **16 PROTESTS, REQUESTS FOR REDRESS, SCORING INQUIRIES**

- 16.1 Protest forms are available at [annapolisyc.org/racing/protest](http://annapolisyc.org/racing/protest) and at the race office, located in the Sailing Office at the AYC Sailing Center. Protests, requests for redress or reopening shall be delivered there within the protest time limit. These may alternatively be delivered by email to [raceoffice@annapolisyc.org](mailto:raceoffice@annapolisyc.org).
- 16.2 Scoring inquiry forms are available at [annapolisyc.org/racing/protest](http://annapolisyc.org/racing/protest) and at the race office. They can be delivered there or by email to [raceoffice@annapolisyc.org](mailto:raceoffice@annapolisyc.org). When the race committee receives a scoring inquiry form, it will review its records and respond as soon as practicable.
- 16.3 The protest time limit is 60 minutes after the race committee signal vessels docks. The race committee will post the protest time limit.
- 16.4 The race committee will post a list of race committee scoring actions no later than the protest time limit.
- 16.5 Notices of protests by the race committee or protest committee will be posted to inform boats under RRS 61.1(b).
- 16.6 As soon as practicable after the protest time limit, the protest committee will post a notice to inform competitors of the schedule and location of

hearings in which they are parties or named as witnesses. Hearings will be held at the Sailing Office at the AYC Sailing Center.

## 17 SCORING

- 17.1 RRS Appendix A4, Low Point System, will apply.
- 17.2 One race is required to be completed to constitute a series.
- 17.3 A boat's series score will be the total of her race scores in both the fixed marks and drop marks races.
- 17.4 For PHRF classes - a boat's corrected time will be calculated using PHRF Time-on-Time scoring and Standard Valid ratings. A boat's corrected time will be her elapsed time multiplied by  $(650 / (550 + \text{PHRF Rating}))$ .
- 17.5 For the ORC sub-division:
- a) A boat's corrected time will be calculated using ORC Time-on-Time ratings. Coastal/Long Distance ratings will be used for the fixed marks race. ORC triple number Inshore ratings will be used for the drop marks races. The race committee will announce which rating (Low, Medium, or High) it will use on VHF radio prior to the warning signal of each race.
  - b) If boats being scored under ORC in a race, have different race lengths, then a boat's ranking under ORC will be based on its corrected time divided by the length of its race.
- 17.6 Boats to be scored TLE will be scored points equal to the number of boats finishing within the finishing window plus two points by the race committee without a hearing but no worse than the number of entries. This changes RRS A4.2 and A5.

## 18 SAFETY REGULATIONS

- 18.1 [DP] A boat that retires from a race, or leaves the racing area between races, shall notify the race committee at the first reasonable opportunity.
- 18.2 [NP] [DP] A boat shall not exercise right of way, cross in proximity to, or interfere with reasonable transit of the race area by commercial ships, tugs, or barges. Boats must take evasive action well in advance of a potentially dangerous situation. The

US Coast Guard, ship captains, and bay pilots have been encouraged to report any incident they observe.

- 18.3 A boat without way may use any means of propulsion to avoid commercial traffic that is under way provided: (a) the boat does not gain an advantage; (b) use of the propulsion is the boat's only means of avoiding the commercial traffic; and (c) the boat submits a report to the race office (in writing or by e-mail to [raceoffice@annapolisyc.org](mailto:raceoffice@annapolisyc.org)) by the protest filing deadline describing the incident and the boat's actions.
- 18.4 The race committee or protest committee may protest a boat for SI 18.2 based on information received from any source. The protest time limit does not apply. This changes RRS 60.2, 60.3, and 61.3.

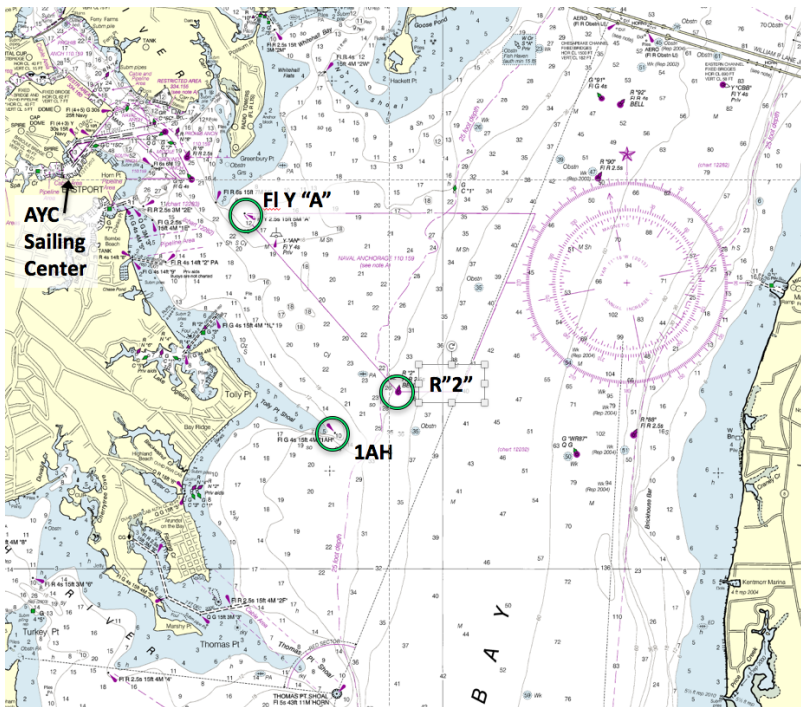
## 19 PRIZES

- 19.1 First, second, and third place awards will be presented for classes that had 5 entries per NoR 2.5.
- 19.2 Awards for the J/22 class will be presented during the post-race party on September 30 at the AYC Sailing Center.
- 19.3 Awards for the J/70 and J/80 classes will be presented at the awards presentation on October 1 at the AYC Sailing Center.
- 19.4 Awards for the J/30, PHRF B/C Combined, Alerion 28, and Cruising classes will be presented during the post-race party on October 7 at the AYC Sailing Center.
- 19.5 Awards for the PHRF A0/A1, PHRF A2, J/35, J/105, and ORC classes will be presented at the awards presentation on October 15 at the AYC Sailing Center.

## 20 DISCLAIMER OF LIABILITY

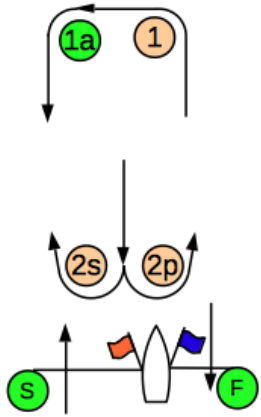
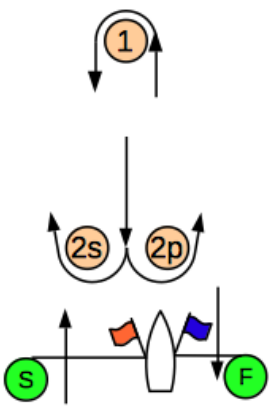
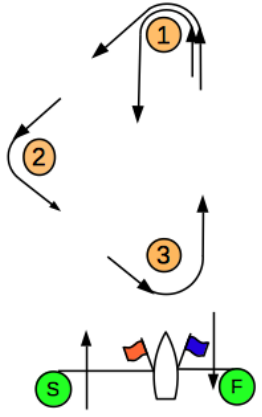
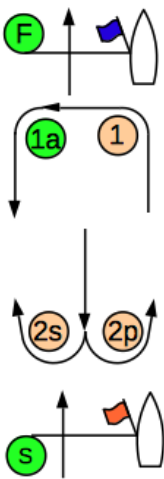
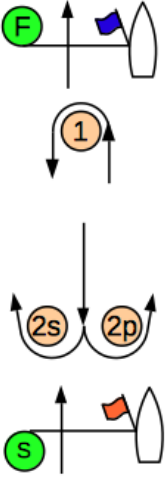
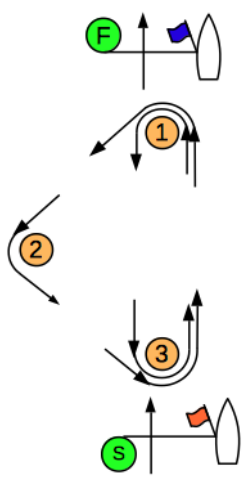
Competitors participate in the regatta entirely at their own risk. See RRS 4, Decision to Race. The organizing authority will not accept any liability for material damage or personal injury or death sustained in conjunction with or prior to, during, or after the regatta.

# SI ATTACHMENT 1 - RACE AREA



## SI ATTACHMENT 2 - COURSES

In the below table, the course designation is followed by the mark rounding order for that course. All marks except 2S are to be rounded to port. If the race committee displays "NO GATE" near the course designation, then mark 2S will not be set. If there is a conflict between the color or shape of a mark below and SI 9 (Marks), SI 9 will govern.

<p style="font-size: 2em; font-weight: bold; margin-bottom: 10px;">LA</p>  <p style="margin-top: 20px;">LA2: Start-1-1a-2s/2p-1-1a-Finish LA3: Start-1-1a-2s/2p-1-1a-2s/2p-1-1a-Finish</p>	<p style="font-size: 2em; font-weight: bold; margin-bottom: 10px;">L</p>  <p style="margin-top: 20px;">L2: Start-1-2s/2p-1-Finish L3: Start-1-2s/2p-1-2s/2p-1-Finish</p>	<p style="font-size: 2em; font-weight: bold; margin-bottom: 10px;">TL</p>  <p style="margin-top: 20px;">TL2: Start-1-2-3-1-Finish TL3: Start-1-2-3-1-3-1-Finish</p>
<p style="font-size: 2em; font-weight: bold; margin-bottom: 10px;">WA</p>  <p style="margin-top: 20px;">WA2: Start-1-1a-2s/2p-Finish WA3: Start-1-1a-2s/2p-1-1a-2s/2p-Finish WA4: Start-1-1a-2s/2p-1-1a-2s/2p-Finish</p>	<p style="font-size: 2em; font-weight: bold; margin-bottom: 10px;">W</p>  <p style="margin-top: 20px;">W2: Start-1-2s/2p-Finish W3: Start-1-2s/2p-1-2s/2p-Finish W4: Start-1-2s/2p-1-2s/2p-Finish</p>	<p style="font-size: 2em; font-weight: bold; margin-bottom: 10px;">TW</p>  <p style="margin-top: 20px;">TW2: Start-1-2-3-Finish TW3: Start-1-2-3-1-3-Finish</p>



# 77th AYC Fall Series

Organizing Authority: Annapolis Yacht Club  
Annapolis, Maryland, USA

Event Website: <http://www.annapolisyc.com/racing/regattas>

## SAILING INSTRUCTIONS FIXED MARKS COURSE - October 7, 2017

The notation '[DP]' in a rule in the sailing instructions (SIs) or notice of race (NoR) means that the penalty for a breach of that rule may, at the discretion of the protest committee, be less than disqualification. The notation '[NP]' in a rule of the SIs or NoR means that a boat may not protest another boat for breaking that rule. This changes RRS 60.1(a).

### 1 RULES

The regatta will be governed by the rules as defined in The Racing Rules of Sailing (RRS).

### 2 COMMUNICATIONS WITH COMPETITORS

2.1 Notices to competitors will be posted on the official notice board at: <https://bit.ly/ayc-fallseries-onb>.

2.2 On the water, the race committee intends to monitor and communicate with competitors via VHF radio on channel 72.

### 3 CHANGES TO SAILING INSTRUCTIONS

3.1 Any change to the SIs will be posted no later than 2 hours before the first scheduled warning signal on the day it will take effect, except that any change to the schedule of races will be posted by 2000 on the day before it will take effect.

### 4 SIGNALS MADE ASHORE

4.1 Signals flown ashore will be flown from the flagpole at the AYC Junior Sailing Center.

4.2 When flag AP is displayed ashore, '1 minute' is replaced with 'not less than 60 minutes' in the race signal AP.

### 5 SCHEDULE OF RACES

5.1 The starting schedule will be:

Time	Start	Warning
1100		Cruising Spinnaker and Non-spinnaker
1105	Cruising Spinnaker and Non-spinnaker	Alberg 30
1110	Alberg 30	CMA A&B
1115	CMA A&B	PHRF B/C Combined
1120	PHRF B/C Combined	J/30
1125	J/30	Alerion 28
1130	Alerion 28	PHRF A2
1135	PHRF A2	J/35
1140	J/35	J/105
1145	J/105	PHRF A0/A1 Combined
1150	PHRF A0/A1 Combined	

5.2 One race is scheduled for each class

5.3 No warning signal will be made after 1600.

5.4 All competitors are invited to a post-race party and awards presentation at the AYC Sailing Center at 1800 with complimentary beer and hors d'oeuvres.

### 6 CLASS FLAGS

6.1 The class flags are:

Class	Class flag	
Cruising Non-spinnaker	Flag 5	
Cruising Spinnaker	Flag 4	
Alberg 30	Flag G	
CMA A&B	Flag W	
PHRF B/C Combined	Flag 6	
J/30	Flag D	
Alerion 28	Pennant w/ logo	
PHRF A2	Flag 2	
J/35	Flag K	
J/105	Flag V	
PHRF A0/A1 Combined	Flag 9	

6.2 A boat shall clearly display two class flags - one at the bow (from the bow pulpit if available) and one at the stern (approximately 5 feet up on the backstay if the boat has a backstay).

### 7 RACING AREA

The racing area will be in the Chesapeake Bay off the mouth of the Severn River.

### 8 THE COURSES

8.1 No later than the preparatory signal the race committee signal boat will display the course designation for the class whose warning signal has been made and announce the course on VHF radio. This changes RRS 27.1.

8.2 If the race committee changes the course designation from what is being sailed by the previous class; it will indicate a course change by

displaying Flag C with a series of short horns. Flag C will be lowered one minute before the start. These are not timed signals.

8.3 For **Cruising Spinnaker and Non-Spinnaker** classes only, the courses will be as shown in Attachment A.

8.4 For **All Other** classes:

(a) The course will use the CBYRA Region 3 Standard Marks as shown in SI Attachment B.

(b) The course to be sailed will be designated by letters displayed on a race committee vessel.

(c) Marks shall be rounded in the order displayed on the race committee vessel, reading from left to right or from top to bottom.

(d) One lap shall be sailed unless the course designation is followed by a numeral that specifies the number of laps to be sailed.

(e) Marks designated in red shall be rounded to port; marks designated in green shall be rounded to starboard.

## 9 MARKS

9.1 Starting and finishing marks will be lime green cylinders. All other marks of the course will be government marks.

9.2 A race committee starting or finishing vessel may set a stand-off buoy. When present, this stand-off buoy, the line attaching it to the race committee vessel, and the race committee vessel are all part of the starting or finishing mark.

## 10 THE START

10.1 The starting line will be between the staff or halyard with an orange flag displayed on the race committee signal vessel and the course side of government mark R"2" (CBYRA Mark X).

10.2 *[DP]* Boats whose warning signal has not been made shall avoid the starting area during the starting sequence for other races.

10.3 A boat that does not start within 10 minutes after her starting signal will be scored Did Not Start without a hearing. This changes RRS A4 and A5.

## 11 RECALLS

The race committee will announce on VHF radio boats identified as OCS, UFD, or BFD. Failure to hear or receive such broadcasts, the timeliness of broadcast or the order in which boats are announced, will not be grounds for redress. This changes RRS 62.1(a).

## 12 CHANGE OF THE NEXT LEG OF THE COURSE

After the starting signal, the course will not be changed. The course may be shortened in accordance with RRS 32 at any rounding mark.

## 13 THE FINISH

The finishing line will be between a staff or halyard displaying an orange flag on the race

committee finishing vessel and the course side of the government mark R"2" (CBYRA Mark X).

## 14 PENALTY SYSTEM

14.1 Penalties while racing: RRS 44.1, One-Turn and Two-Turns Penalties will apply.

14.2 Penalties after racing: RRS/US Appendix V2, Penalty Taken After the Race, will apply.

## 15 TIME LIMITS

15.1 The time limit for all boats is 1630. Boats failing to finish before the time limit, and not subsequently retiring, penalized or given redress, will be scored Time Limit Expired (TLE) without a hearing. This changes RRS 35, A4, A5, and A11.

## 16 PROTESTS, REQUESTS FOR REDRESS, SCORING INQUIRIES

16.1 Protest forms are available at [annapolisyc.org/racing/protest](http://annapolisyc.org/racing/protest) and at the race office, located in the Sailing Office at the AYC Sailing Center. Protests, requests for redress or reopening shall be delivered there within the protest time limit. These may alternatively be delivered by email to [raceoffice@annapolisyc.org](mailto:raceoffice@annapolisyc.org).

16.2 Scoring inquiry forms are available at [annapolisyc.org/racing/protest](http://annapolisyc.org/racing/protest) and at the race office. They can be delivered there or by email to [raceoffice@annapolisyc.org](mailto:raceoffice@annapolisyc.org). When the race committee receives a scoring inquiry form, it will review its records and respond as soon as practicable.

16.3 The protest time limit 2 hours after the last boat has finished the last race of the day or the race committee signals no more racing today, whichever is later. The race committee will post the protest time limit.

16.4 The race committee will post a list of race committee scoring actions no later than the protest time limit.

16.5 Notices of protests by the race committee or protest committee will be posted to inform boats under RRS 61.1(b).

16.6 As soon as practicable after the protest time limit, the protest committee will post a notice to inform competitors of the schedule and location of hearings in which they are parties or named as witnesses. Hearings will be held at the Sailing Office at the AYC Sailing Center.

## 17 SCORING

17.1 RRS Appendix A4, Low Point System, will apply.

17.2 One race is required to be completed to constitute a regatta.

17.3 For classes racing in the fixed marks race and drop marks races, a boat's series score will be the total of her race scores in both the fixed marks and drop marks races.



- 17.4 Corrected times for classes using PHRF will be calculated using PHRF Time-on-Time scoring with Circular-Random Valid ratings. A boat's corrected time will be her elapsed time multiplied by  $(650 / (550 + \text{PHRF Rating}))$ .
- 17.5 Corrected times for classes using ORC will be calculated using ORC Time-on-Time Coastal/Long Distance ratings. If boats being scored under ORC in a race, have different race lengths, then a boat's ranking under ORC will be based on its corrected time divided by the length of its race.
- 17.6 Boats to be scored TLE will be scored points equal to the number of boats finishing within the finishing window plus two points by the race committee without a hearing but no worse than the number of entries. This changes RRS A4.2 and A5.

## 18 SAFETY REGULATIONS

- 18.1 [DP] A boat that retires from a race, or leaves the racing area between races, shall notify the race committee at the first reasonable opportunity.
- 18.2 [NP] [DP] A boat shall not exercise right of way, cross in proximity to, or interfere with reasonable transit of the race area by commercial ships, tugs, or barges. Boats must take evasive action well in advance of a potentially dangerous situation. The US Coast Guard, ship captains, and bay pilots have been encouraged to report any incident they observe.
- 18.3 A boat without way may use any means of propulsion to avoid commercial traffic that is under way provided: (a) the boat does not gain an advantage; (b) use of the propulsion is the boat's

only means of avoiding the commercial traffic; and (c) the boat submits a report to the race office (in writing or by e-mail to [raceoffice@annapolisyc.org](mailto:raceoffice@annapolisyc.org)) by the protest filing deadline describing the incident and the boat's actions.

- 18.4 The race committee or protest committee may protest a boat for SI 18.2 based on information received from any source. The protest time limit does not apply. This changes RRS 60.2, 60.3, and 61.3.

## 19 PRIZES

- 19.1 First, second, and third place awards will be presented for each class.
- 19.2 Additional prizes may be awarded at the discretion of the organizing authority.
- 19.3 Awards for the J/30, PHRF B/C Combined, Alerion 28, and Cruising classes will be presented during the post-race party on October 7 at the AYC Sailing Center.
- 19.4 Awards for the PHRF A0/A1, PHRF A2, J/35, J/105, and ORC classes will be presented at the awards presentation on October 15 at the AYC Sailing Center.

## 20 DISCLAIMER OF LIABILITY

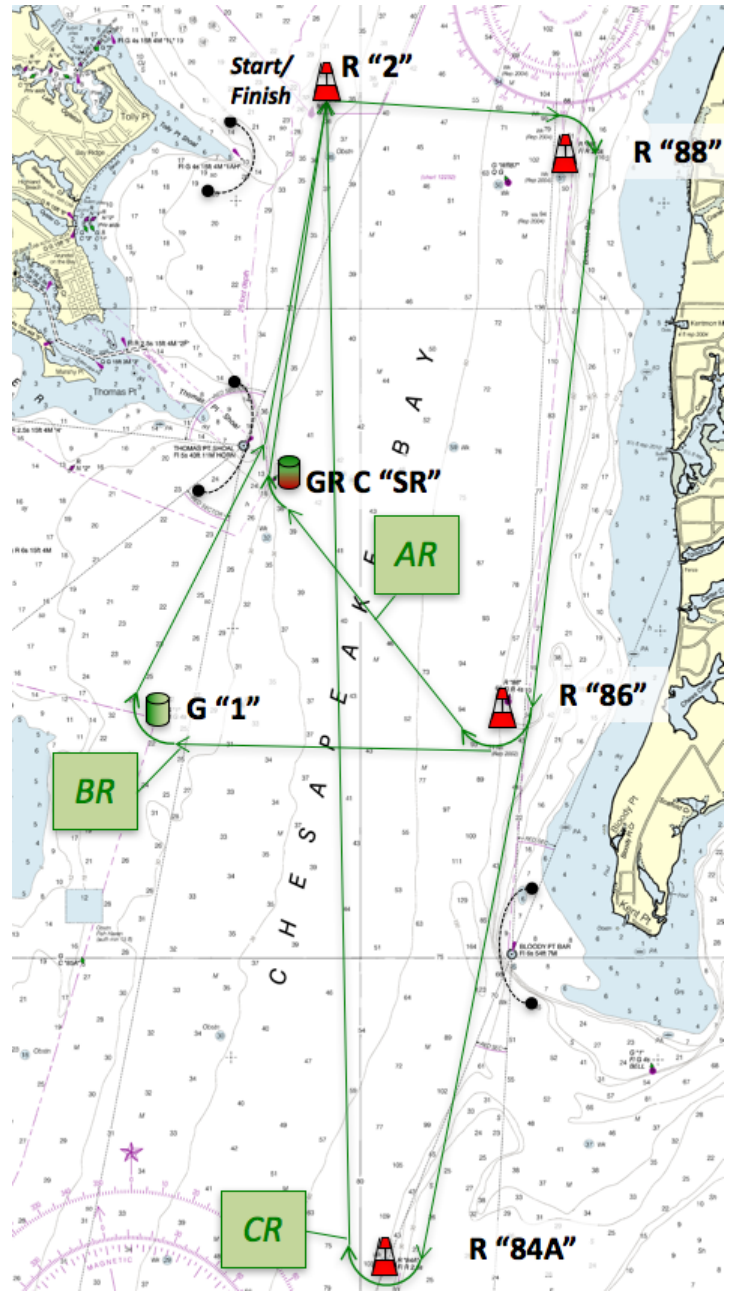
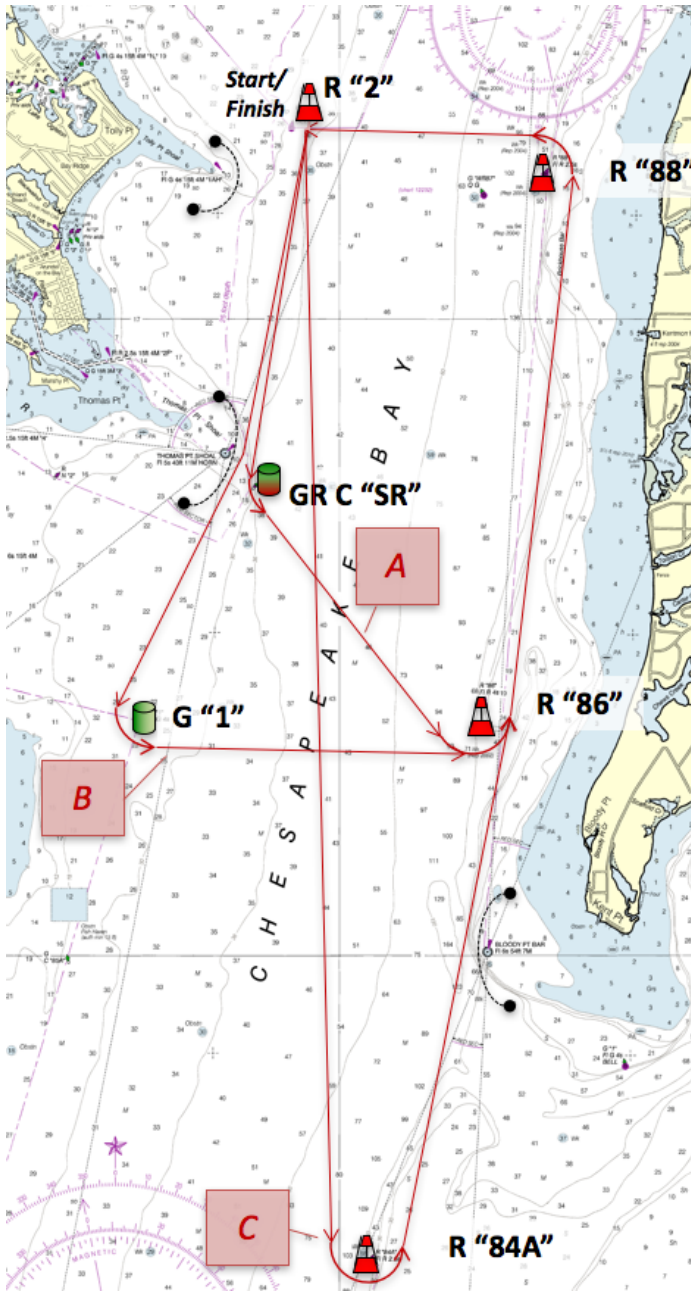
Competitors participate in the regatta entirely at their own risk. See RRS 4, Decision to Race. The organizing authority will not accept any liability for material damage or personal injury or death sustained in conjunction with or prior to, during, or after the regatta.

# SI ATTACHMENT A

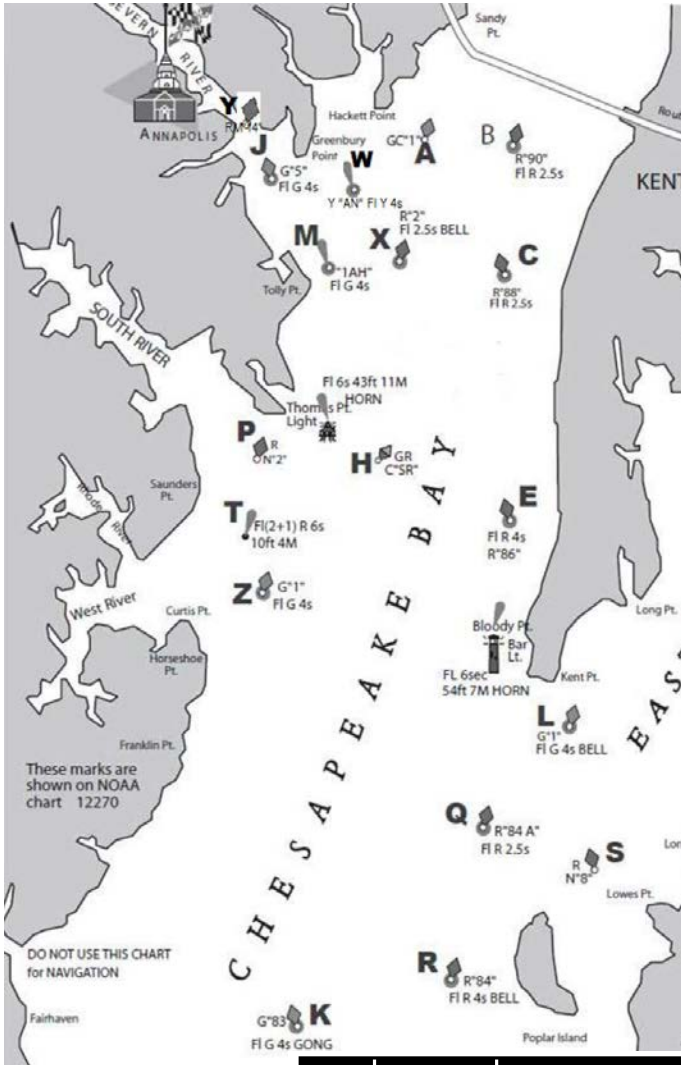
## COURSES FOR CRUISING SPINNAKER AND NON-SPINNAKER CLASSES

Course	Rounding Side	Rounding Order	Distance
A	Port	Start near R"2", GR C "SR", R "86", R "88", Finish at R"2"	11.4
B	Port	Start near R"2", G "1", R "86", R "88", Finish at R"2"	13.6
C	Port	Start near R"2", R "84A", R "86", R "88", Finish at R"2"	19.5
AR	Starboard	Start near R"2", R"88", R"86", GR C "SR", Finish at R"2"	11.4
BR	Starboard	Start near R"2", R"88", R"86", G "1", Finish at R"2"	13.6
CR	Starboard	Start near R"2", R"88", R"86", R "84A", Finish at R"2"	19.5

For ALL courses, the following navigational aids rank as passing marks and shall be passed on the channel side at all times: Tolly Point Dolphin ("1AH"); Thomas Point Shoal Light; Bloody Point Bar Light.



## SI ATTACHMENT B - CBYRA Region 3 Standard Marks



For ALL courses, the following navigational aids rank as passing marks and shall be passed on the channel side at all times: Tolly Point Dolphin ("1AH"); Thomas Point Shoal Light; Bloody Point Bar Light.

MARK	GOV'T. ID	CHARACTERISTICS	LOCATION	Lat 38° N	Lon 76° W
X	R "2"	Fl R 2.5s Bell	1.3 nm E of Tolly Point	56.513	25.495
A	G "C"1"	G Can	1.1 nm SSE of Hackett Point	58.192	24.861
B	R "90"	Fl R 2.5s Buoy	1.3 nm SSW of Chesapeake Bay Bridge	58.294	23.326
C	R "88"	Fl R 2.5s Buoy	3.3 nm S of Chesapeake Bay Bridge	56.13	22.934
E	R "86"	Fl R 4s Buoy	2.0 nm N of Bloody Point	51.991	23.54
F	R "2A"	Fl R 4s Bell	0.6 nm N of Wades Point	50.559	18.213
H	GR "C"SR"	GR Can	0.3 nm SE of Thomas Pt. Light	53.648	25.88
J	G "5"	Fl G 4s Buoy	0.38 nm SW of Greenbury Pt	58.299	27.72
K	G "83"	Fl G 4s GONG	2.5 nm WSW of Poplar Island	45.125	26.655
L	G "1"	Fl G 4s Bell	1.0 nm S of Kent Point	49.119	22.193
M	"1AH"	Fl G 4s 15ft Dolphin	NNE of Tolly Point (Shoal inside)	56.143	26.175
N	R "4"	Fl 4s Buoy	0.8 nm N of Tilghman Point	52.562	15.121
P	R "N"2"	R Nun	1.6 nm WSW of Thomas Pt Light	53.727	27.86
Q	R "84A"	Fl R 2.5s Buoy	2.16 NNW of Poplar Island	47.592	24.697
R	R "84"	Fl R 4s Bell	1.3 nm W of Poplar Island	45.457	25.114
S	R "N"8"	R Nun	0.95 nm NW of Lowes Point	47.112	20.872
T	Fixed	Fl(2+1) R 6s 15 ft 4M	0.6 nm E of Saunders Pt Shoal Junction Light	53.035	28.626
U	RC Choice	Inflatable drop Mark	May be set by R.C. at Starting Line		
V	RC Choice	Inflatable drop Mark	May be set by R.C. as 1 <sup>st</sup> windward mark		
W	Y "AN"	Fl Y 4s	NOAA Weather Buoy off of Greenbury Pt	57.49	26.50
Y	R "N"14"	TR Nun	0.3 nm NNW of Triton Pt	59.11	28.35
Z	G "1"	Fl G 4s Buoy	2.6 NM NE of Curtis Point	51.839	26.973

**PASSING MARKS:** The following Marks will always be considered as passing marks and passed on the channel side at all times:  
 Tolly Point Dolphin (Mark AM@)  
 Thomas Point Shoal Light  
 Bloody Point Bar Light

*Approximate positions of government marks are offered for reference only to assist in locating on a navigational chart. Government symbols or numbers may be changed. Changes are published in Notice to Mariners. Marks listed above have been validated as Standard Racing Marks by the CBYRA Vice President for Race Administration.*